



## Submittal Data Sheet

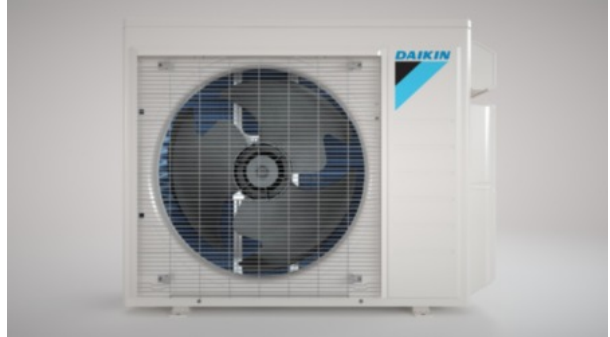
Daikin AURORA 1.5-Ton, 2-Port Heat Pump, Ductless ODU  
2MXL18WMVJU9

### FEATURES

- 2 Zone enhanced Capacity Multi-Zone
- Night Quiet Mode Automatic Defrost Quick Warming Function  
Automatic Defrosting Priority Room Setting Cool/Heat mode lock  
Self Diagnosis Wiring error check function Anti-corrosion treatment  
of outdoor heat exchanger"

### BENEFITS

- 12 Year Limited Parts Warranty w/ online registration
- PAM control Energy efficient operation Quiet outdoor unit operation  
Unit performs self diagnosis and indicates using LED lights"





## Submittal Data Sheet

Daikin AURORA 1.5-Ton, 2-Port Heat Pump, Ductless ODU  
2MXL18WMVJU9

EFFICIENCY					PERFORMANCE			
	SEER2	EER2	HSPF2	COP	COOLING:		HEATING:	
Non-Ducted:	16.00	12.00	8.70	4.20	Rated (Btu/hr):	17,800	Rated (Btu/hr):	18,500
Ducted:	14.30	9.00	7.70	3.12	Operating Range:	14°F - 115°F	Operating Range:	-13°F - 60°F
Mixed:	15.15	10.50	8.20	3.66	Rated Cooling Conditions:		Rated Heating Conditions:	
					Indoor (°F DB/DB): 80 / 67 Ambient (°F DB/WB): 95 / 75		Indoor (°F DB/WB): 70 / 60 Ambient (°F DB/WB): 47 / 43	

ELECTRICAL			PIPING		
Power Supply (V/Hz/Ph): *See Engineering Manuals for other voltages.	*208-230 / 60 / 1		Max. System Piping Length: (feet):	164	Gas Conn. (inch): 3/8
System MCA: (Min.circuit amps)	17.0		Max. Interunit Piping Length: (feet):	164	Liquid Conn. (inch): 1/4
System MFA: (Max.fuse amps)	20.0		Max. Height Difference IDU to ODU (feet):	49.25	Drain Conn. (inch): 5/8
Compressor RLA: (Rated load amps)	15.5		Max. Height Difference IDU to IDU (feet):	82	
Outdoor fan motor FLA: (Full load amps)	0.3		Refrigerant Pre-Charged Pipe Length (ft):	98.4	
Outdoor fan motor W: (Rated output watts)	78.0				

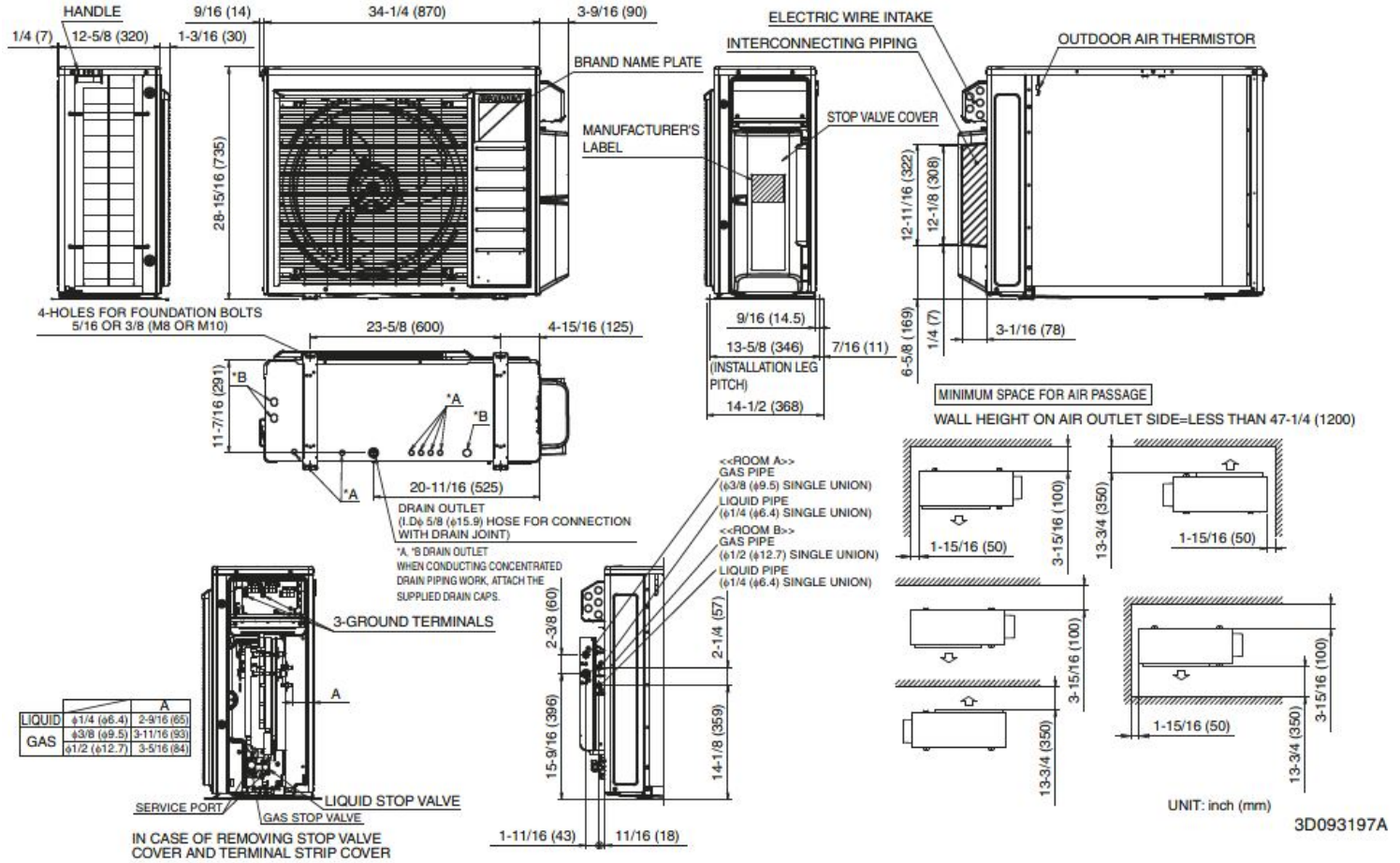
SPECIFICATIONS			
Compressor Type:	Swing	Compressor Stage:	Inverter
Refrigerant Type:		Refrigerant Oil:	PVE (FVC50K)
Factory Charge (Lbs):	6.17	Additional Refrigerant Charge (Ozs/ft):	0.21
COOLING - Airflow Rate (cfm):		HEATING - Airflow Rate (cfm):	
High:	2,151	High:	2,180
Med:	2,151	Med:	2,180
Low:	1,950	Low:	1,118
Sound Level (dBA):	50	Sound Level (dBA):	51
Dimensions (HxWxD) (in):	28-15/16 x 34-1/4 x 12-5/8	Net Weight (lb):	142

## Submittal Data Sheet

Daikin AURORA 1.5-Ton, 2-Port Heat Pump, Ductless ODU

2MXL18WMVJU9

## DIMENSIONAL DRAWING





Submittal Data Sheet

Daikin AURORA 1.5-Ton, 2-Port Heat Pump, Ductless ODU  
2MXL18WMVJU9

ACCESSORIES

PART NUMBER	DESCRIPTION	INCLUDED
DACA-WB-3	Powder-Coated Wall-Mounted Bracket	No
KEH063A4E	Daikin BML DrainPan Heater Large	No
KEH063A4EA	Bml LRg Drain Pan Heater Rev A	No
KKG063A42	Back protection wire net	No
KKG063A43	Side protection wire net (18 & 24)	No
KPS063A41	Snow hood (intake side plate) (15, 18 & 24)	No
KPS063A44	Snow hood (intake rear plate) (15,18 & 24)	No
KPS063A47	Snow hood (outlet) (15, 18 & 24)	No
KPW063B4	Air direction adjustment grille	No
RAQAHLGD1	Rear Coil Guard BML	No